

CAMERA



iVIEW Technology Security & Information

SHR-978-A / 979-A

SHR 981-A / 983-A

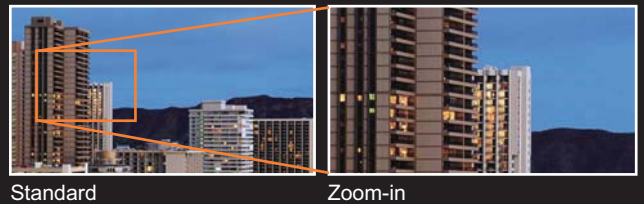


SHR Fast Dome

- 25X Optical Zoom Lens (3.43 ~ 85.7 mm) / 35X Optical Zoom Lens (3.43 ~ 120 mm)
- 520 Horizontal TV Lines
- Automatic / Manual Iris Control
- Preset ID / Name
- Preset Background Environment File
- Private Mask
- Up to 128 Programmable Preset Positions
- RS - 485 Control Interface
- Up to 256 Fast Dome Configuration
- Auto Tracking
- 8 languages



Optical Zoom Lens



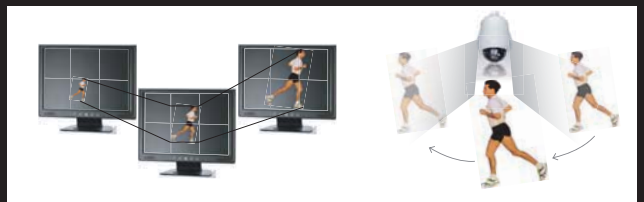
Day & Night



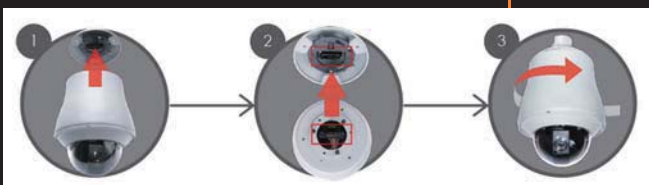
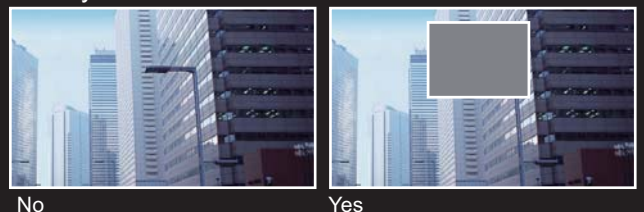
Auto-tracking

Auto lock and Zoom-in to oncoming objects

(Selection: 1.Auto tracking
2.Presets patrol)



Privacy Zone



GAMMERA

iVIEW Security & Information Technology

● Specifications

25X / 35X Outdoor High Resolution Day & Night Fast Dome Camera Series			
Model	Standard Model	SHR-981-A	SHR-983-A
	Tracking Model	SHR-978-A	SHR-979-A
General	System	NTSC	
	Power Supply	SHR-978-A / SHR-979-A: AC 24V±10%	
	Power Consumption	Standard model 22 W (Heater : ON) / Tracking model 24 W (Heater : ON)	
	Image Pick-up Device	Sony 1/4" EXview HAD CCD	
	Effective Pixels	768 (H) x 494 (V)	
	Scanning System	2:1 Interlace	
	Scanning Frequency	15.734 KHz (H) , 59.94 Hz (V)	
	Synchronization	Internal / Line Lock Selectable	
	Video Output	CVBS 1.0 Vp-p / 75 Ω BNC	
	Horizontal Resolution	Color : 520 TV Lines Mono: 580 TV Lines	
	Signal to Noise Ratio	More Than 50 dB (AGC : Off)	
	Minimum Illumination	Color : 0.1 Lux at F1.6 Mono: 0.01 Lux at F1.6	
	IP Rating	IP 66	
	Ambient Operation Temperature	- 10°C ~ + 50°C (14°F ~ 122°F)	
	Operating Humidity	0% ~ 90%	
	Dimensions	326 mm (H) x 210 mm (D)	
	Weight	3200 g	
Heater Activation	On: 15, Off: 25		
Fan Activation	On: 35, Off: 25		
Pan & Tilt	Panning Range	360° Endless	
	Panning Mode	Manual , Auto , Manual Position , Sequential Position	
	Panning Speed	Manual Approx. 0.15°/s ~ 120°/s 8 Steps, 16 Steps / Preset Approx. 1°/s ~ 255°/s, Alarm Trigger Speed 360°/s	
	Tilting Range	- 6° ~ + 96°	
	Tilting Mode	Manual , Auto , Manual Position , Sequential Position	
Tilting Speed	Manual Approx. 0.15°/s ~ 120°/s 8 Steps, 16 Steps / Preset Approx. 1°/s ~ 255°/s, Alarm Trigger Speed 360°/s		
Main Function	Control Interface	RS-485 Transmission	
	Control Function	Pan and Tilt / Zoom and Focus / Iris and ICR / 128 Preset Position / Home Position / Patrol	
	Character Display	On / Off (Preset ID : 16 Alphanumeric Characters , Zoom Ratio , Alarm Message , Date / Time , Pan / Tilt Angle)	
	Zoom Speed	0 ~ 7 Selectable [7 : Approx. 3.0 Second (Tele to Wide) in Manual Mode] , 0 ~ 7 Selectable [7 : Approx. 4.0 Second (Tele to Wide) in Manual Mode]	
	Focus Speed	Slow / MID. / Fast Selectable [Fast : Approx. 2.0 Second (Far to Near) in Manual Mode]	
	Auto Focus	Auto / One Push	
	Iris	ALC (Adjustable Output Target Level) / Manual	
	IR Cut filter	YES	
	Password Lock	Function Setup	
	Electronic Shutter Speed	Auto / Manual Selectable (1/60 ~ 1/100,000 sec)	
	Back Light Compensation	On / Off Selectable	
	White Balance	ATW / PUSH / MWB Selectable	
	Auto Gain Control	0 ~ 36 dB Selectable	
	Auto Mode	OFF / AUTO / SEQ / TOUR / PATROL (STOP / PLAY / LEARN)	
	Privacy Zone	On / Off Selectable (Up to 8 Zones Settings)	
	Image Mirror	On / Off Selectable	
	Image Negative	On / Off Selectable	
Alarm Input / Output	6 Input [Alarm In 1 ~ 6 (NC / NO)] , 1 Output (Alarm Out NC / NO)		
Schedule Setting	Alarm Input / Auto Mode / Daylight Saving Time		
25X Lens	Zoom Ratio	25X Optical Zoom	
	Focal Length	3.43 mm ~ 85.7 mm	
	Maximum Aperture Ratio	1 : 1.6 (Wide) ~ 3.7 (Tele)	
	Minimum Object Distance	1.5 m (Tele)	
	Iris Range	F1.6 ~ 360 , Close	
Angle Field of View	Wide : 68.6° (D) 57.8° (H) 43.7° (V) / Tele : 3.12° (D) 2.53° (H) 1.83° (V)		
35X Lens	Zoom Ratio	35X Optical Zoom	
	Focal Length	3.43 mm ~ 120 mm	
	Maximum Aperture Ratio	1 : 1.6 (Wide) ~ 4.5 (Tele)	
	Minimum Object Distance	1.5 m (Tele)	
	Iris Range	F1.6 ~ 360 , Close	
Angle Field of View	Wide : 68.6° (D) 57.8° (H) 43.7° (V) / Tele : 2.23° (D) 1.70° (H) 1.30° (V)		

Design and specifications are subject to change without notice.

Peripheral Bracket



Peripheral Housing

